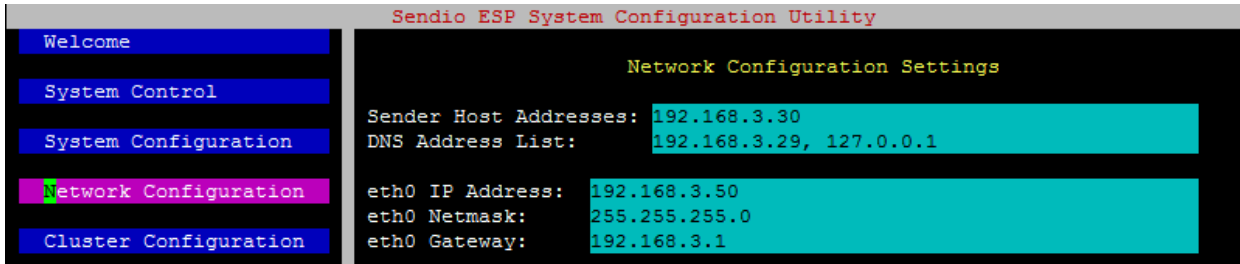


How to configure Exchange Smart Host

In Exchange 2003, it's possible to configure a smarthost on the Default SMTP Virtual Server but, if you do it this way, you can only set a single smarthost. The preferred method, therefore, is to use an SMTP Connector for your outgoing emails which does allow multiple smarthosts to be specified.

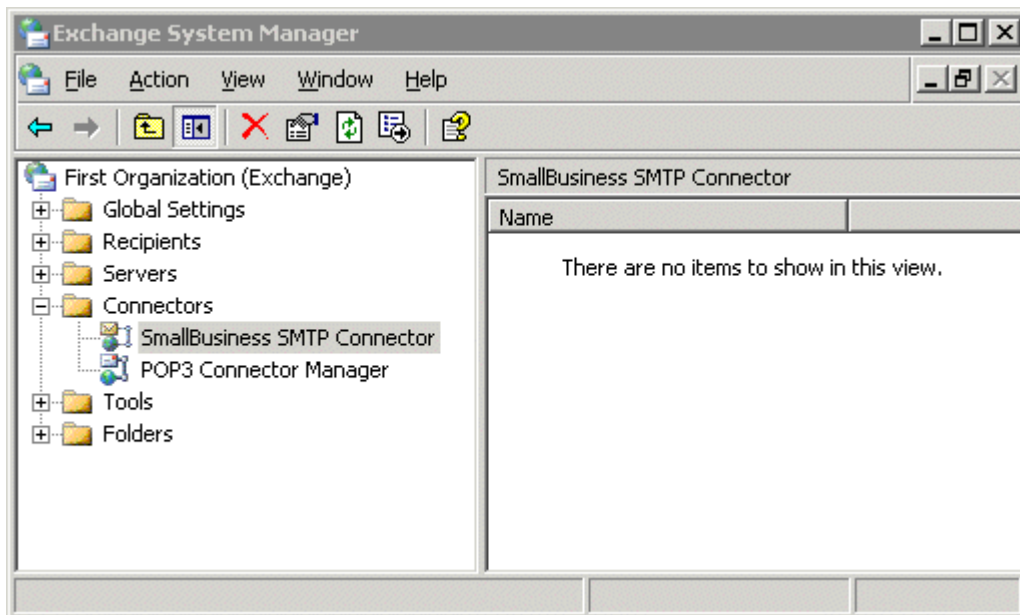
For Exchange 2007/2010 there's only one way to configure a smarthost which is on the Send Connector.

This guide assumes you have already configured the IP address of your Exchange server in the Sender Host Addresses field of the Sendio SSH (PuTTY) interface. If you have not please login and navigate to the Network Configuration section, add the internal IP address of your Exchange server to the Sender Host Addresses field, highlight Save and press Enter.



HOW TO CONFIGURE A SMARTHOST ON EXCHANGE 2003

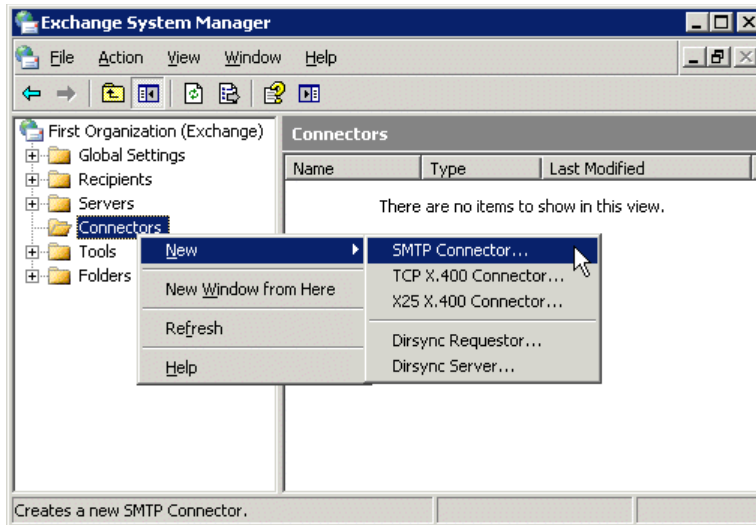
Open **Exchange System Manager** and click on the + next to Connectors to see if you are already using an SMTP Connector. SBS2003 comes with a pre-configured SMTP Connector as shown below:



If you need to create a new connector:

- o Right-click on **Connectors** and select **New > SMTP Connector...**

If a SMTP Connector already exists, right-click on it and choose **Properties**

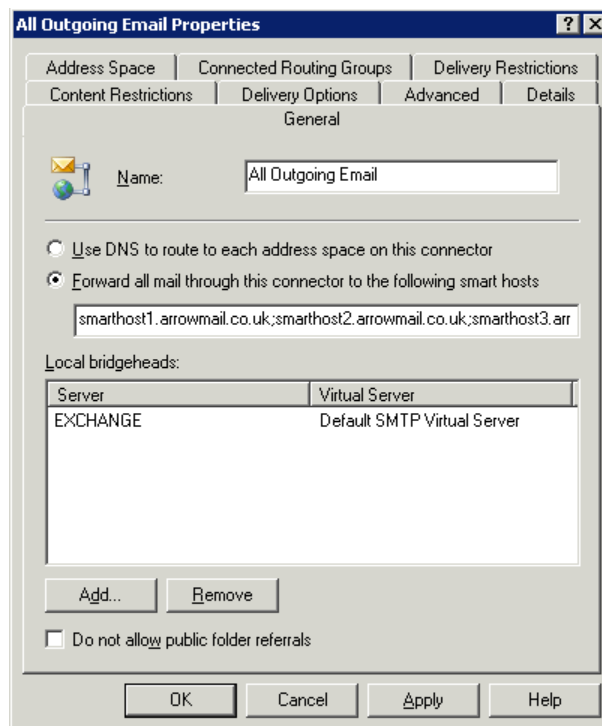


The **SMTP Connector > Properties** page opens which has 8 tabs.

(There could be a 9th tab called Security if you've previously enabled this tab by a registry change, but, in any case, there's nothing to configure on this tab.)

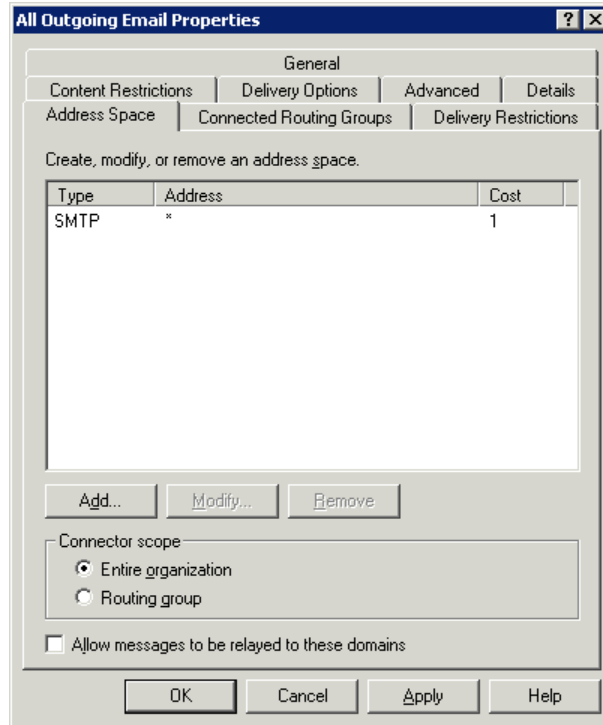
On the **General** tab where there are 3 things to configure:

- **Name**
 - Call it what you want for example "All Outgoing Email".
- Select *"Forward all mail through this connector to the following smart hosts"* and enter the internal IP address of your Sendio appliance.
 - You will need to place square brackets [] around the IP address.
- **Local bridgeheads:**
 - This is your Exchange server.
 - Click **Add...** and there will only be one option.



Go to the **Address Space** tab.

- Click **Add...** and select the default options which are:
 - Type = SMTP
 - Email Domain = *
 - Cost = 1
 - Connector scope = Entire Organization
 - "Allow messages to be relayed to these domains" is not selected



There's nothing to change on the other 6 tabs.

Click OK and close **Exchange System Manager**.

In order for the new settings to take effect, you need to restart the following services:

- Microsoft Exchange Routing Engine
- Simple Mail Transport Protocol (SMTP)

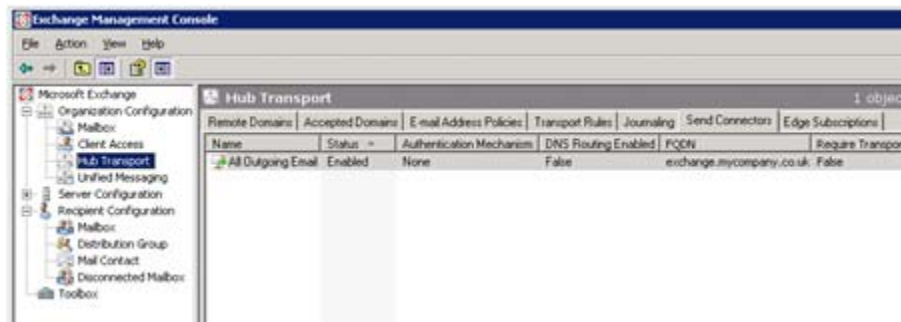
Rebooting the server will also enable the new settings, if this is easier.

HOW TO CONFIGURE A SMARTHOST ON EXCHANGE 2007 AND 2010

If your Exchange Server 2007/2010 is currently able to send emails externally, a Send Connector must already have been created and configured correctly on the Hub Transport server. Configuring Exchange 2007/2010 to use Sendio as a smarthosts, therefore, just requires you to modify the settings on this Send Connector.

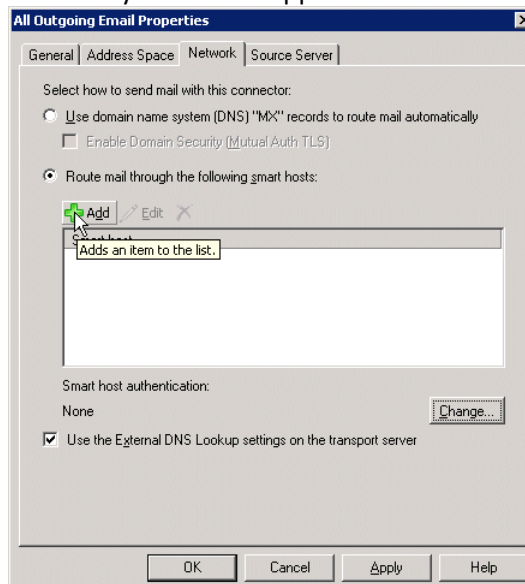
For Exchange 2007/2010, Microsoft has been split into separate roles, the various jobs that Exchange has to perform, with the implication that each role will be handled by a different server. The Hub Transport role is the one responsible for sending and receiving external emails. In the real world of most companies, a single Exchange server is likely to be performing all the various roles. If you have a dedicated Hub Transport server these steps must be configured on that specific server.

- Open the **Exchange Management Console**
- Click on the **+** next to Organization Configuration
- Select **Hub Transport**
 - Select the **Send Connectors** tab

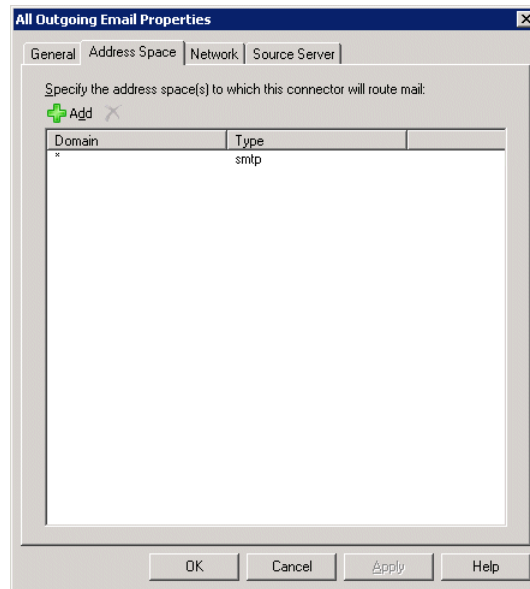


(If you can't see all the columns shown above, click View - Add/Remove Columns...)

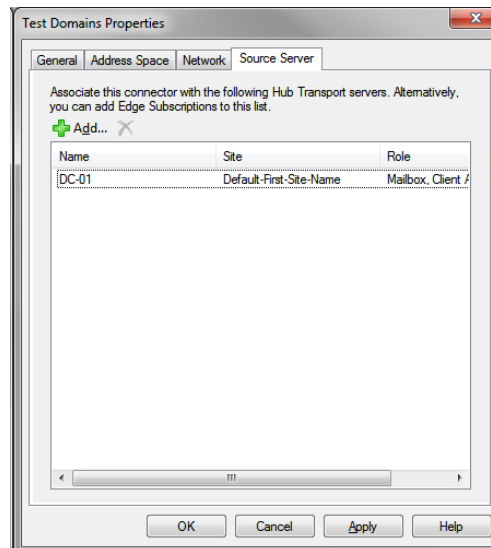
- Right-click on the existing Send Connector
 - Select **Properties**
 - Select the **Network** tab.
 - Select *"Route mail through the following smart hosts:"* and click **Add**
 - Enter the internal IP address of your Sendio appliance.



All other tabs will be unchanged. To be safe, please confirm the Address Space tab looks like this:



If it's not already populated, the Source Server tab should have one entry, the name of your Exchange server.



Once you click OK the changes will take effect immediately.